

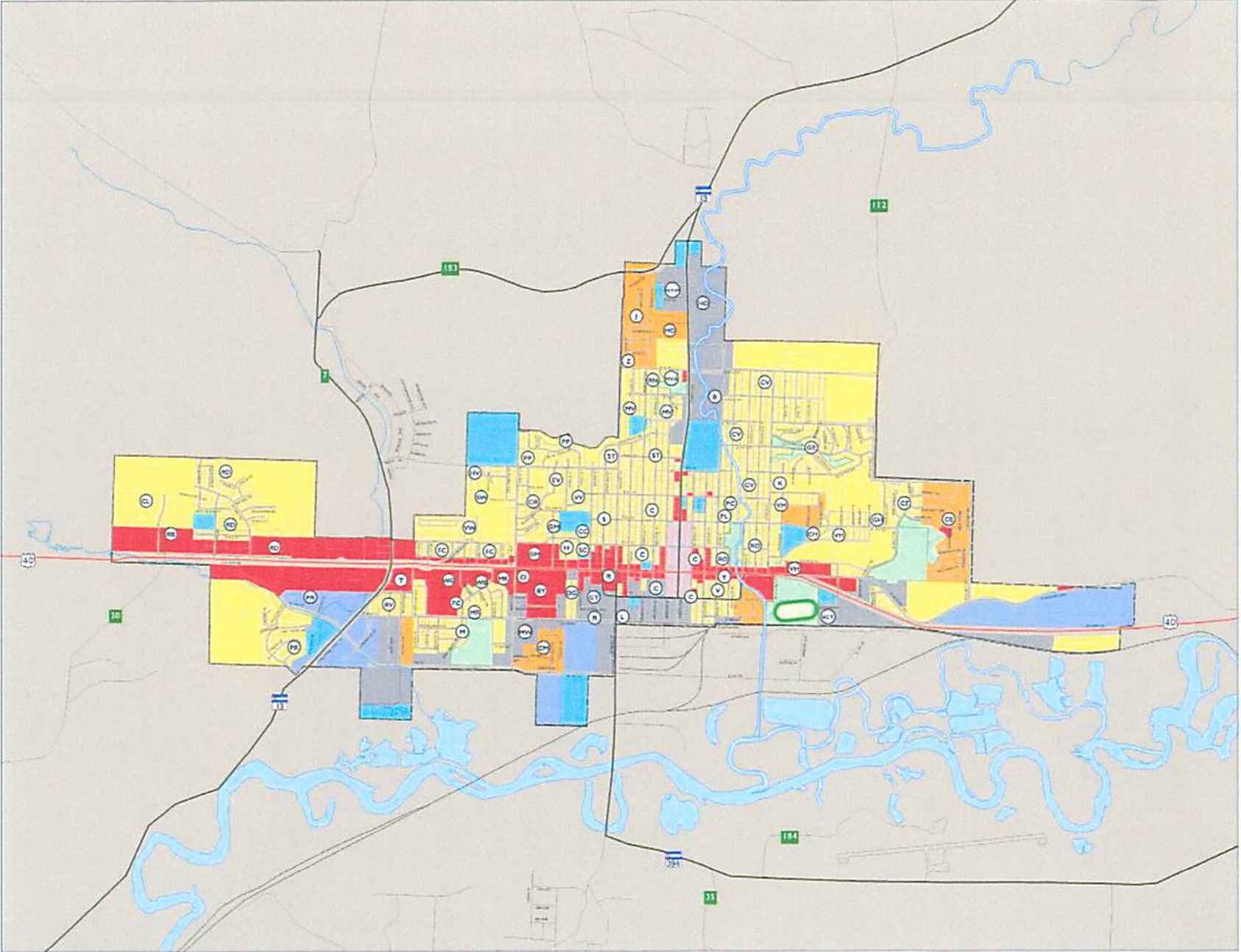
LEGEND

- Parcel
- Railroad
- U.S. Highway
- State Highway
- County Road
- Local Road
- City Boundary
- Water Bodies

- Land Use**
- Downtown Business
 - Highway Commercial
 - Industrial
 - Mobile Home
 - Residential
 - Institutional
 - Parks and Open Space
 - Business Park

Subdivisions

| Name | Label |
|--------------------------------|-------|
| Beatty Subdivision | B |
| Beyer Minor Subdivision | BY |
| Cedar Mountain Mobile Park | CL |
| Columbine Subdivision | CC |
| Congregational Church Addition | CC |
| Country Club Heights | CH |
| Craig East Subdivision | CE |
| Craig Industrial Park | CI |
| Craig Townsite | C |
| Craig View Addition | CV |
| Crest Village Addition | CR |
| Davis Gardens | DG |
| East Craig Townsite Addition | ECT |
| Eventide Addition | EY |
| Frontier City | FC |
| Glen Erie Subdivision | GE |
| Golden Heights Subdivision | GH |
| Golden Meadows | GM |
| Green Tree Business Park | GT |
| Harris Owen Subdivision | HO |
| Havrilla Subdivision | HV |
| Holiday Park Subdivision | H |
| Jensen Mobile Home | J |
| Kennedy Minor Subdivision | K |
| Lyinger Minor Subdivision | L |
| Martin Subdivision | MR |
| Meadows Subdivision | M |
| Meadowood Subdivision | MW |
| Mon Kim Business Park | MK |
| Mount View | MV |
| Mount View Addition | MVA |
| North Yampa Industrial Park | NYIP |
| Pan-O-Rama Park | PP |
| Park Creek Estates | PC |
| Park Lane Addition | PL |
| Pine Ridge Subdivision | PR |
| Ranney | R |
| Ridgeview Subdivision | RD |
| River View Subdivision | RV |
| Rosedale Addition | RO |
| Rutyan Subdivision | RN |
| Rutyan Business Park | RB |
| Sandwood | SW |
| Schrader Minor Subdivision | SC |
| State Addition | ST |
| Sunset Addition | S |
| Tucker Minor Subdivision | T |
| Valley View Addition | VV |
| Victory Addition | V |
| Victory Heights | VH |
| Villa West | VW |
| Westgate | WG |
| Woodbury Addition | WB |
| Young's Minor Subdivision | Y |
| Zimmerman Subdivision | Z |



This MAP is for general planning purposes only, and is subject to update and change. Any user should check with the City of Craig and/or Moffat County prior to use to be sure that the data is current. Because of the scale of this map, any user should not rely on it for the exact definition of any boundary or feature that shows on this map.

This MAP is based on information from numerous sources and the accuracy of which is not guaranteed by the City of Craig and/or Moffat County. The City of Craig and/or Moffat County is not responsible and shall not be liable to the user for damages of any kind arising from the data or information shown on this map.

**CITY OF CRAIG
 LAND USE**