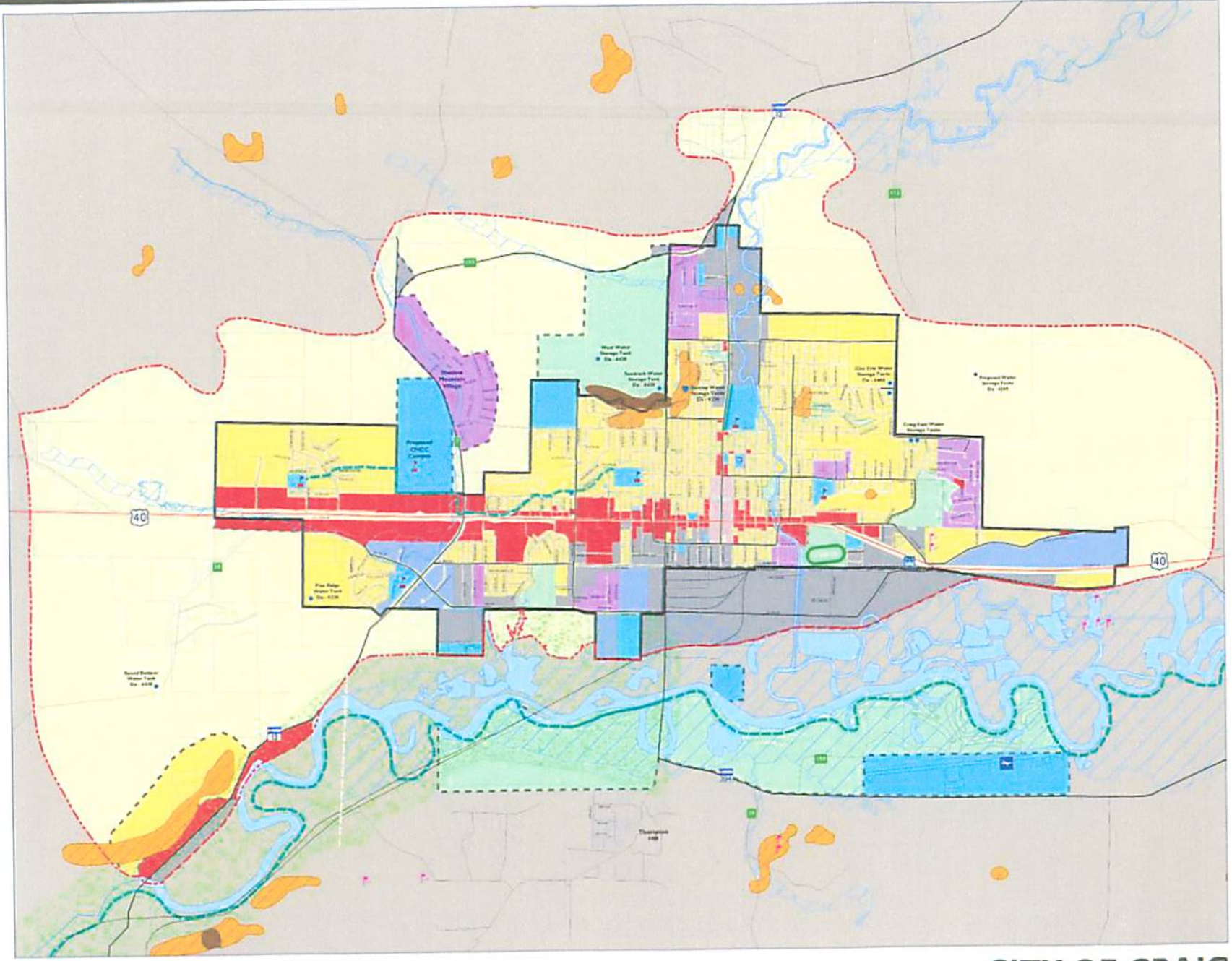


LEGEND

- Parcel
 - Railroad
 - U.S. Highway
 - State Highway
 - County Road
 - Local Road
 - Collector
 - Existing Path/Bike Trail
 - Proposed Path/Bike Trail
 - School
 - Airport
 - Hospital
 - Proposed Transit Center
- Hydrology**
- Water Bodies
 - 100 Year Floodplain (FEMA)
 - Levels of Floodplain Mapping
- Conservation Areas**
- Very High Significance
- Land Use**
- Agricultural/Rural Residential
 - Highway Commercial
 - Downtown Business
 - Business Park
 - Industrial
 - Mobile Home
 - Residential
 - Institutional
 - Parks and Open Space
 - Urban Development - Non-designated
 - Urban Development - Designated
 - Sand/Gravel Mine
- Plan Area**
- Craig Community Area
 - Urban Development Area
- Slope (Percent)**
- 15% - 30%
 - Over 30%



This map is for general planning purposes only, and is subject to updates when changes are made. Any user should check with the City of Craig and/or Moffat County prior to use to be sure that the data is correct. Because of the scale of this map, the user should not rely on it for the exact definition of any boundary or distance line shown on this map.

This map is based on information from various sources and the accuracy of which is not guaranteed by the City of Craig and/or Moffat County. The City of Craig and/or Moffat County is not responsible and shall not be liable for the user for damages of any kind arising from the data or information shown on this map.