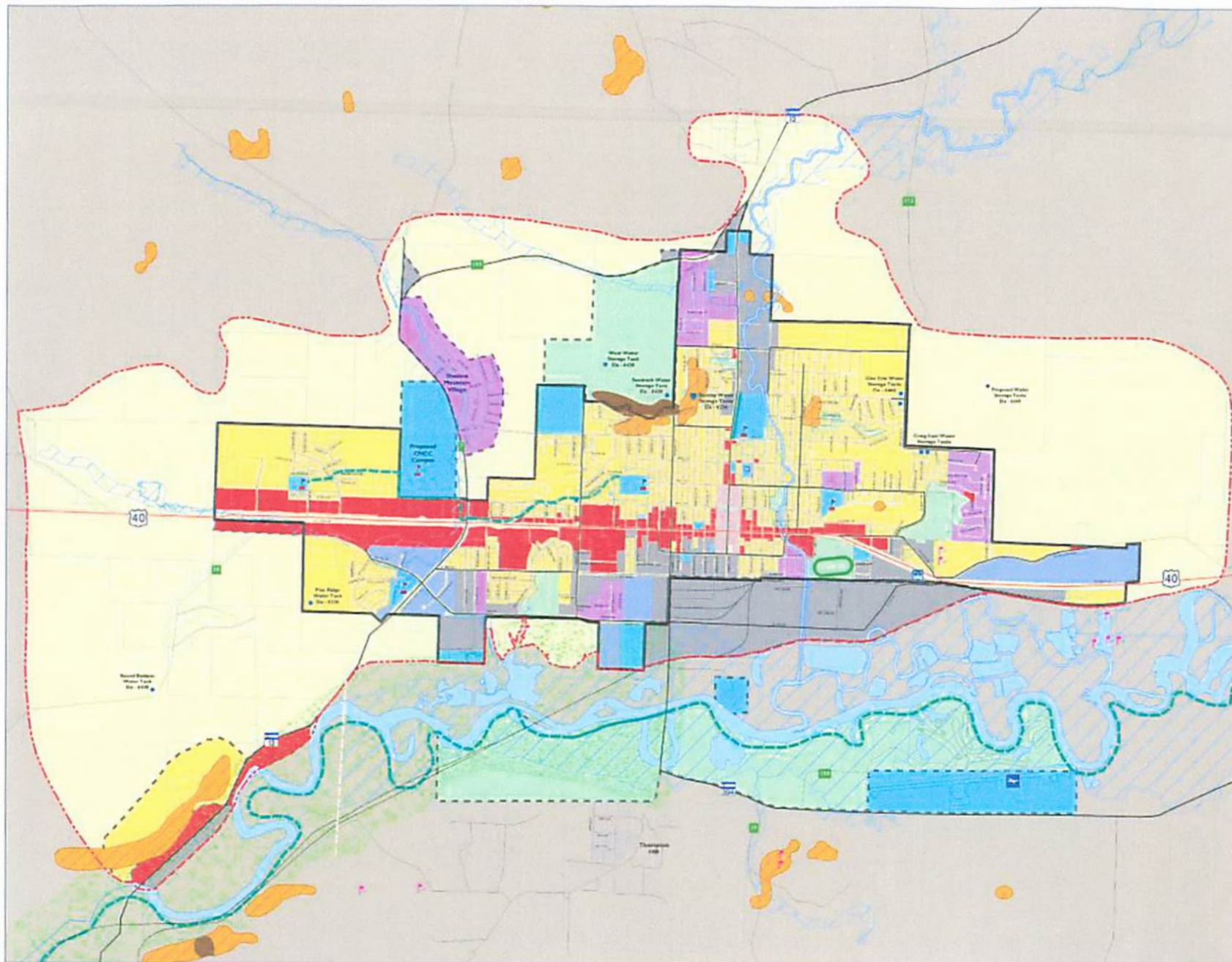


- LEGEND**
- Parcel
  - Railroad
  - U.S. Highway
  - State Highway
  - County Road
  - Local Road
  - Collector
  - Existing Ped/Bike Trails
  - Proposed Ped/Bike Trails
  - School
  - Airport
  - Hospital
  - Proposed Transit Center
- Hydrology**
- Water Bodies
  - 100 Year Floodplain (FEMA)
  - Levels of Floodplain Mapping
- Conservation Areas**
- Very High Significance
- Land Use**
- Agricultural/Rural Residential
  - Highway Commercial
  - Downtown Business
  - Business Park
  - Industrial
  - Multiple Home
  - Residential
  - Institutional
  - Parks and Open Space
  - Urban Development - Non-designated
  - Urban Development - Designated
  - Sand/Gravel Mine
- Plan Area**
- Craig Community Area
  - Urban Development Area
- Slope (Percent)**
- 15%-30%
  - Over 30%



This map is for general planning purposes only, and is subject to updates and changes. For more detailed information, please contact the City of Craig and/or Moffat County. The City of Craig and/or Moffat County is not responsible and shall not be liable for any damages of any kind arising from the use of this map.

This map is based on information from various sources and the accuracy of which is not guaranteed by the City of Craig and/or Moffat County. The City of Craig and/or Moffat County is not responsible and shall not be liable for any damages of any kind arising from the use of this map.

# CITY OF CRAIG PLAN DIRECTION