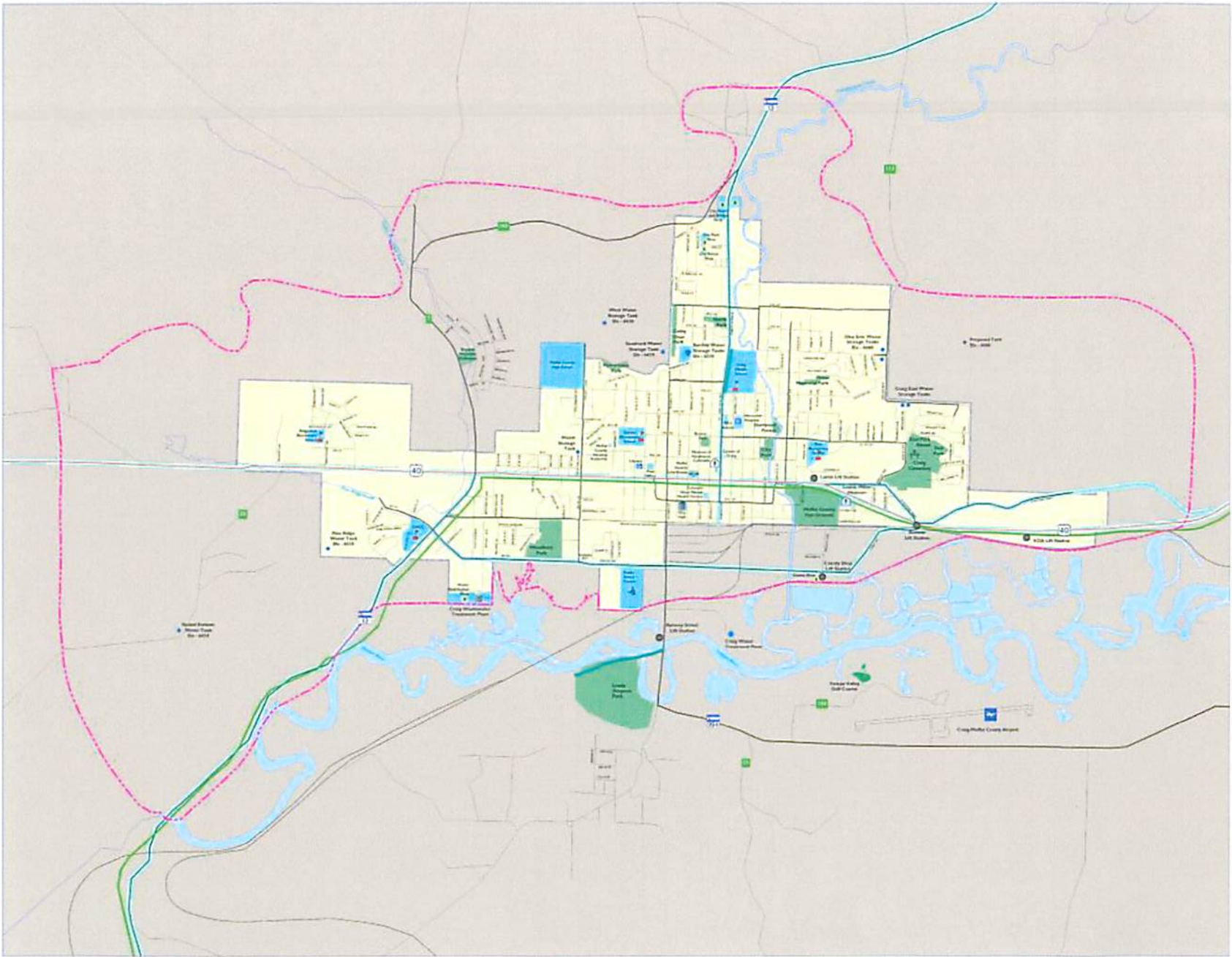


- LEGEND**
- U.S. Highway
  - State Highway
  - County Road
  - Local Road
  - Collector Road
  - Railroad
  - Designated Hazardous Materials Route
  - Existing Ped/Bike Trail
  - Water Bodies
  - School
  - Public/Institutional Use
  - Park
  - City Boundary
  - Existing Urban Development Area Boundary
  - Airport
  - Cemetery
  - City Hall
  - Courthouse
  - Hospital
  - Library
  - Museum
  - Safety Center
  - Waste Water Treatment Plant
  - Waste Water Pump Stations
  - Water Storage Tanks
  - Proposed Water Storage Tank
  - Water Treatment Plant
  - Maintenance Shop



Note: The Urban Development Boundary is for general location purposes. There must be 80 feet of elevation difference between a water tank and a property to receive water service, to ensure adequate water pressure of 35 psi per City Code requirements.



This MAP is for general planning purposes only, and is subject to updates and changes. Any user should check with the City of Craig and/or Moffat County prior to rely on the data in this map. Because of the scale of this map, any user should not rely on it for the exact definition of any boundary or structure line, except on-site maps.

This MAP is based on information from numerous sources and the accuracy of which is not guaranteed by the City of Craig and/or Moffat County. The City of Craig and/or Moffat County is not responsible and shall not be liable in the event for damages of any kind arising from the data or information shown on this map.

# URBAN DEVELOPMENT AREA SERVICES AND INFRASTRUCTURE