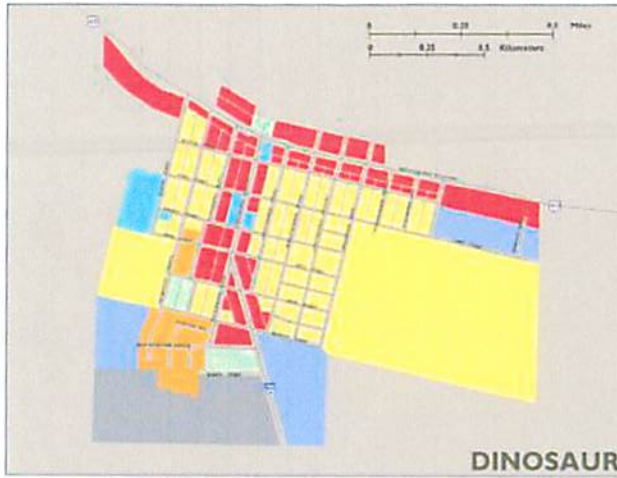


LEGEND

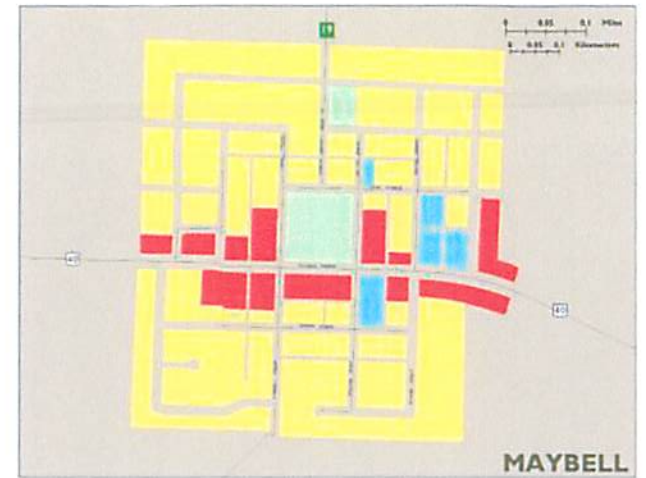
- Parcel
 - Railroad
 - 40 U.S. Highway
 - State Highway
 - 114 County Road
 - Local Road
 - City Boundary
 - Water Bodies
- Land Use**
- Downtown Business
 - Highway Commercial
 - Industrial
 - Mobile Home
 - Residential
 - Institutional
 - Parks and Open Space
 - Business Park

Subdivisions

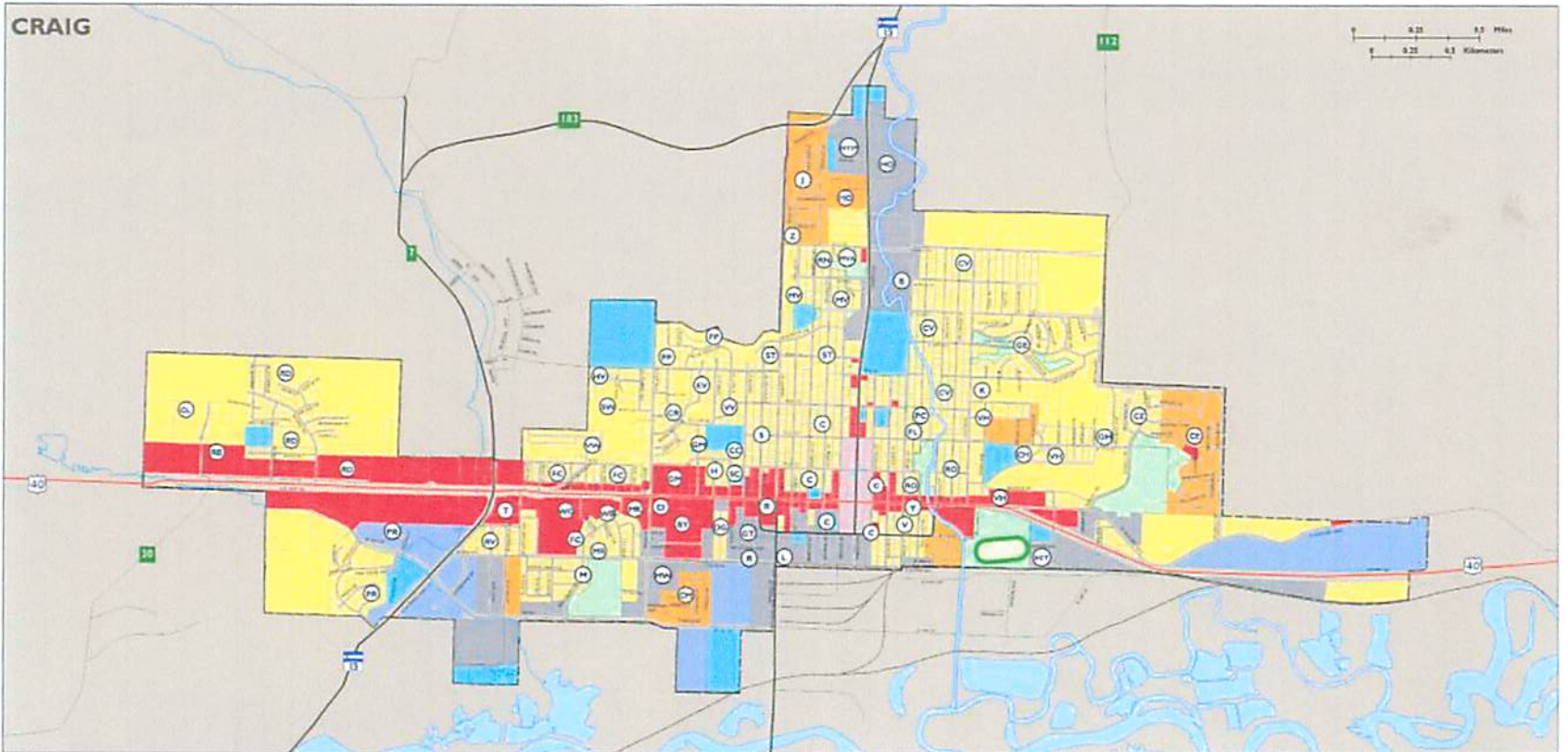
Name	Label
Beatty Subdivision	B
Beyer Minor Subdivision	BY
Cedar Mountain Mobile Park	CM
Columbine Subdivision	CL
Congregational Church Addition	CC
Country Club Heights	CH
Craig East Subdivision	CE
Craig Industrial Park	CI
Craig Townsite	C
Craig View Addition	CV
Crest Village Addition	CR
Davis Gardens	DG
East Craig Townsite Addition	ECT
Eventide Addition	EY
Frontier City	FC
Glen Erie Subdivision	GE
Golden Heights Subdivision	GH
Golden Meadows	GM
Green Tree Business Park	GT
Harris Owen Subdivision	HO
Havilla Subdivision	HV
Holiday Park Subdivision	H
Jensen Mobile Home	J
Kennedy Minor Subdivision	K
Lyainger Minor Subdivision	L
Martin Subdivision	MR
Meadows Subdivision	M
Meadowood Subdivision	MW
Mon Kim Business Park	MK
Mound View	MV
Mount View Addition	MVA
North Yampa Industrial Park	NYIP
Pan-O-Rama Park	PP
Park Creek Estates	PC
Park Lane Addition	PL
Pine Ridge Subdivision	PR
Ranney	R
Ridgeview Subdivision	RD
River View Subdivision	RV
Rosedale Addition	RO
Rumyan Subdivision	RY
Rugers Business Park	RB
Sandwood	SW
Schrader Minor Subdivision	SC
State Addition	ST
Sunset Addition	S
Tucker Minor Subdivision	T
Valley View Addition	VV
Victory Addition	V
Victory Heights	VH
Villa West	VW
Westgate	WG
Woodbury Addition	WB
Young's Minor Subdivision	Y
Zimmerman Subdivision	Z



DINOSAUR



MAYBELL



CRAIG



This MAP is for general planning purposes only, and is subject to updates and changes. Any user should check with the City of Craig and/or Moffat County prior to use to be sure that this data is correct. Because of the scale of this map, we can't show and only can be for the exact location of any boundary or division. See charts on side page.

This MAP is based on information from numerous sources and the accuracy of which is not guaranteed by the City of Craig and/or Moffat County. The City of Craig and/or Moffat County is not responsible and shall not be liable to the user for damages of any kind arising from the data or information shown on this map.

COMMUNITY LAND USE