

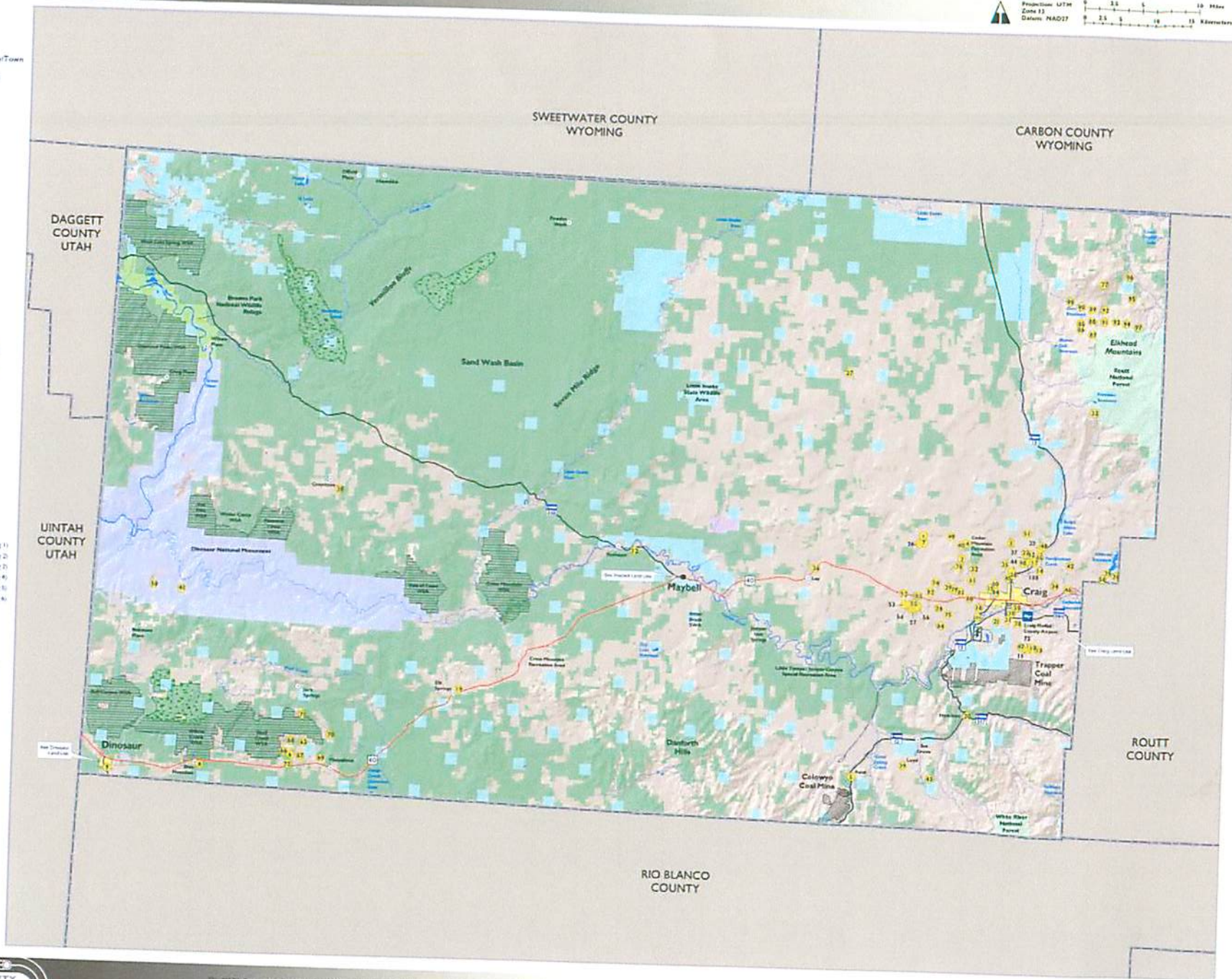
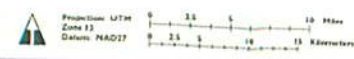
- LEGEND**
- Town
  - Place
  - ✈ Airport
  - U.S. Highway
  - State Highway
  - Railroad
  - River/Stream
  - Lake/River
  - Incorporated City/Town
  - County Boundary

- Public Land**
- Bureau of Land Management (46.8%)
  - Colorado State Lands (6.2%)
  - National Park Service (5.1%)
  - U.S. National Forest (1.4%)
  - U.S. Fish and Wildlife Service (0.4%)

- Areas of Critical Environmental Concern
- Wilderness Study Area

- Private Land**
- Agricultural
  - Coal Mine
  - Power Plant
  - Salvage Yard
  - Residential Subdivision Lots Under 35 Acres
  - Residential Subdivision Lots Over 35 Acres

- |                                     |                                 |
|-------------------------------------|---------------------------------|
| 1 Adams Acres                       | 38 Robinson Home                |
| 2 Adams                             | 39 Rowley                       |
| 3 Arapaho Meadows                   | 40 Sand Springs #1              |
| 4 Arapaho Mesa                      | 41 Sand Springs #2              |
| 5 Arce                              | 42 Sand Springs #3              |
| 6 Barkley                           | 43 Sand Springs #4              |
| 7 Big Gulch Estates                 | 44 Sand Springs #5              |
| 8 Blue Mountain Estates (East Side) | 45 Sand Springs #6              |
| 9 Blue Mountain Village             | 46 Shoshone Haven               |
| 10 Bruce Highlands                  | 47 Shoshone Industrial          |
| 11 Bux                              | 48 Shoshone                     |
| 12 Cowdrey Home                     | 49 Shoshone Mesa                |
| 13 Cornerstone Ranch                | 50 Sinton                       |
| 14 Cornerwood                       | 51 Sorens                       |
| 15 Country Meadows                  | 52 Shadow Mountain              |
| 16 Deer Run                         | 53 Sherman                      |
| 17 Durr                             | 54 Skull Creek Estates (Pang 1) |
| 18 East Valley View                 | 55 Skull Creek Estates (Pang 2) |
| 19 Elk Springs                      | 56 Skull Creek Estates (Pang 3) |
| 20 Elkview                          | 57 Skull Creek Estates (Pang 4) |
| 21 Eerie Ranch                      | 58 Skull Creek Estates (Pang 5) |
| 22 Fox Hill                         | 59 Skull Creek Estates (Pang 6) |
| 23 Gibson                           | 60 Skull Creek Plaza            |
| 24 Glen                             | 61 Southview Addition           |
| 25 Gorman                           | 62 Sunset Ranch                 |
| 26 Good Hope                        | 63 Tanager Floor                |
| 27 Great Divide                     | 64 The Ridge                    |
| 28 Graysone                         | 65 Thunderbolt Wilderness       |
| 29 Gulch                            | 66 Tucker Plaza #2              |
| 30 Harbison                         | 67 Virginia Dale                |
| 31 Henry Parkview                   | 68 Wilder Floor                 |
| 32 Haystack                         | 69 West Ridge Estates           |
| 33 Hickory Mountain                 | 70 Western Knolls               |
| 34 Johnson High Meadows             | 71 Westview                     |
| 35 Kilar Home                       | 72 Wheeland Heights             |
| 36 Sky Creek Estates                | 73 Wilderness Ranch #1          |
| 37 La Brea                          | 74 Wilderness Ranch #2          |
| 38 Lark                             | 75 Wilderness Ranch #3          |
| 39 Lloyd                            | 76 Wilderness Ranch #4          |
| 40 Malibu                           | 77 Wilderness Ranch #5          |
| 41 Maple Ranch                      | 78 Wilderness Ranch #6          |
| 42 Highland Acres                   | 79 Wilderness Ranch #7          |
| 43 Mountain Lake Home               | 80 Wilderness Ranch #8          |
| 44 North Ranch Estates              | 81 Wilderness Ranch #9          |
| 45 Northview                        | 82 Wilderness Ranch #10         |
| 46 Oxygene View                     | 83 Wilderness Ranch #11         |
| 47 Owl                              | 84 Wilderness Ranch #12         |
| 48 Powers Estates                   | 85 Wilderness Ranch #13         |
| 49 Quarry #2A                       | 86 Wilderness Ranch #14         |
| 50 Redrock Ranch                    | 87 Wilderness Ranch #15         |
|                                     | 88 Wilshire                     |
|                                     | 89 Willow View Ranches          |
|                                     | 90 Wyatt                        |
|                                     | 91 Yampa View                   |



This MAP is for general planning purposes only, and is subject to update and change. The user should check with the City of Craig and/or Moffat County for the most current information. The City of Craig and/or Moffat County are not responsible for any damage or loss resulting from the use of this map.

This MAP is based on information from numerous sources and the accuracy of which is not guaranteed by the City of Craig and/or Moffat County. The City of Craig and/or Moffat County is not responsible and shall not be liable for any damage or loss resulting from the use of this map.

# MOFFAT COUNTY LAND USE