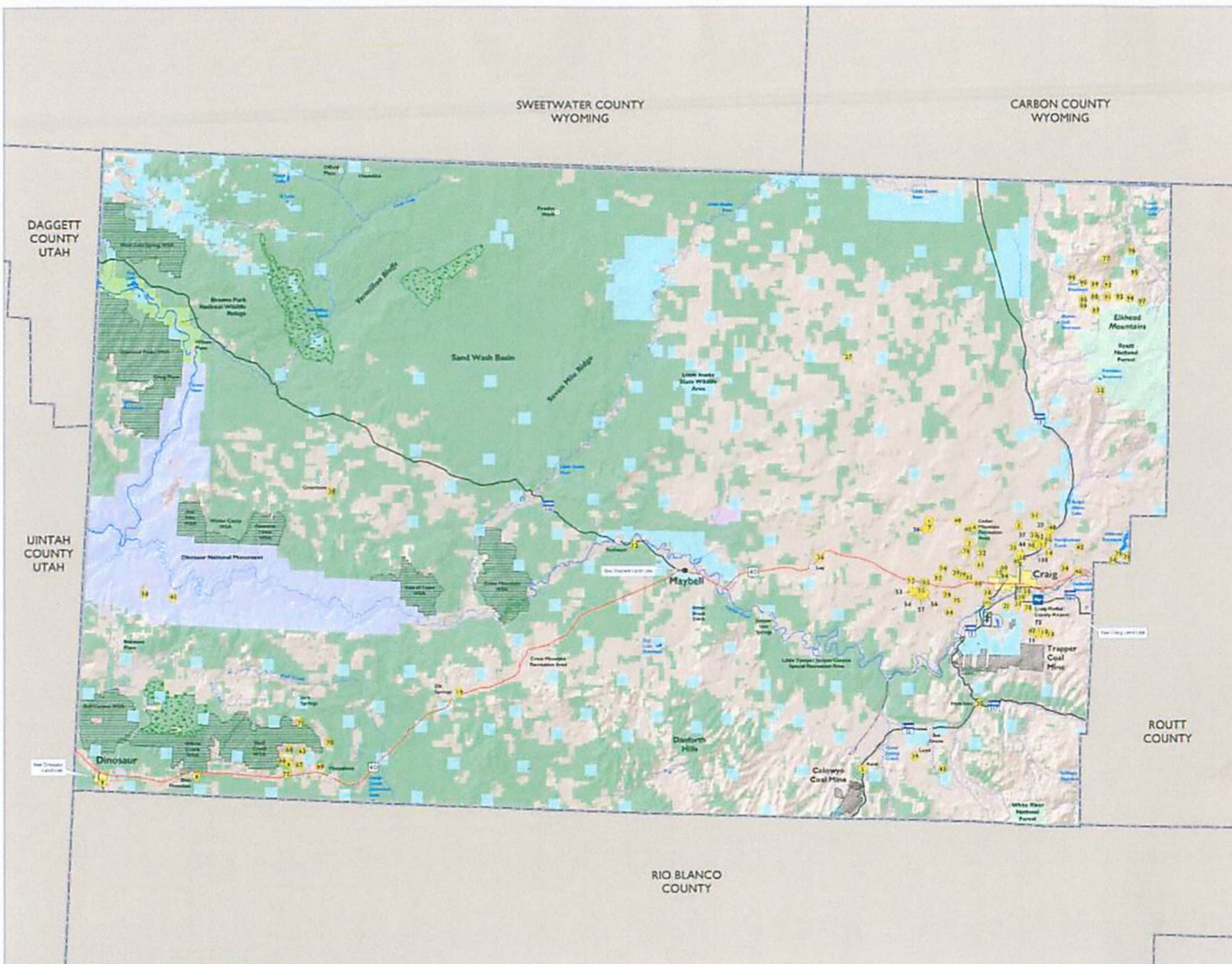


- LEGEND**
- Town
  - Place
  - ✈ Airport
  - U.S. Highway
  - State Highway
  - Railroad
  - Public Land
    - Bureau of Land Management (46.8%)
    - Colorado State Lands (6.3%)
    - National Park Service (5.1%)
    - U.S. National Forest (1.4%)
    - U.S. Fish and Wildlife Service (0.4%)
    - Areas of Critical Environmental Concern
    - Wilderness Study Area
  - Private Land
    - Agricultural
    - Coal Mine
    - Power Plant
    - Salvage Yard
    - Residential Subdivision Lots Under 35 Acres
    - Residential Subdivision Lots Over 35 Acres
- |                                 |                                |
|---------------------------------|--------------------------------|
| 1 Adams Acres                   | 38 Robinson Moor               |
| 2 Adams                         | 39 Rocky                       |
| 3 Arroyo Meadows                | 40 Sand Springs #1             |
| 4 Arroyo Mesa                   | 41 Sand Springs #2             |
| 5 Auld                          | 42 Sand Springs #3             |
| 6 Bailey                        | 43 Sand Springs #4             |
| 7 Big Gulch Estates             | 44 Sand Springs #5             |
| 8 Blue House Estates (Good Sub) | 45 Schmidt Farms               |
| 9 Blue Mountain Village         | 46 Schmidt Industrial          |
| 10 Bruce Highlands              | 47 Schreier                    |
| 11 Burt                         | 48 Schreier #2                 |
| 12 Capital Hill Moor            | 49 Senter                      |
| 13 Carbonate Ranch              | 50 Senter                      |
| 14 Carbonate                    | 51 Shaver Mountain             |
| 15 Country Meadows              | 52 Shaver                      |
| 16 Deer Run                     | 53 Skull Creek Estates (Pkg 1) |
| 17 Dunn                         | 54 Skull Creek Estates (Pkg 2) |
| 18 East Range View              | 55 Skull Creek Estates (Pkg 3) |
| 19 Elk Springs                  | 56 Skull Creek Estates (Pkg 4) |
| 20 Elbow                        | 57 Skull Creek Estates (Pkg 5) |
| 21 Eury Ranch                   | 58 Skull Creek Flats           |
| 22 Fox Hill                     | 59 Suckman Addition            |
| 23 Gibson                       | 60 Sutter Ranch                |
| 24 Gosh                         | 61 Taylor Moor                 |
| 25 Gort                         | 62 The Ridges                  |
| 26 Good Hope                    | 63 Thunderbolt Wilderness      |
| 27 Great Divide                 | 64 Tucker Flats #2             |
| 28 Grosvenor                    | 65 Virginia Dale               |
| 29 Guffy                        | 66 Wabbe Moor                  |
| 30 Hardscan                     | 67 West Range Estates          |
| 31 Henry Parkview               | 68 Wiggins Knolls              |
| 32 Hixson                       | 69 Wildman                     |
| 33 Hixson Mountain              | 70 Wheeland Heights            |
| 34 Johnson High Meadows         | 71 Wilderness Ranch #1         |
| 35 Kline Moor                   | 72 Wilderness Ranch #2         |
| 36 Lay Creek Estates            | 73 Wilderness Ranch #3         |
| 37 La Brea                      | 74 Wilderness Ranch #4         |
| 38 Lark                         | 75 Wilderness Ranch #5         |
| 39 Madras                       | 76 Wilderness Ranch #6         |
| 40 Madras Ranch                 | 77 Wilderness Ranch #7         |
| 41 Migration Acres              | 78 Wilderness Ranch #8         |
| 42 Monument Basin Moor          | 79 Wilderness Ranch #9         |
| 43 North Ranch Estates          | 80 Wilderness Ranch #10        |
| 44 Northview                    | 81 Wilderness Ranch #11        |
| 45 Peckey View                  | 82 Wilderness Ranch #12        |
| 46 Per                          | 83 Wilderness Ranch #13        |
| 47 Power Estates                | 84 Wilkins                     |
| 48 Quarry #2B                   | 85 Willow Grove Ranches        |
| 49 Redrock Ranch                | 86 Wynn                        |
|                                 | 87 Yampa View                  |



This MAP is for general planning purposes only, and is subject to update and change. Use of this MAP is not intended to be used as a legal document. Because of the scale of this map, only major roads are shown and the exact location of any boundary or other line shown on this map.

This MAP is based on information from numerous sources and the accuracy of which is not guaranteed by the City of Craig and/or Moffat County. The City of Craig and/or Moffat County is not responsible and shall not be liable for any loss or damage of any kind arising from the use of information shown on this map.

# MOFFAT COUNTY LAND USE